

Wendy Briggs

From: Mark Peterson
Sent: Thursday, December 13, 2012 1:51 PM
To: Justin Kagy
Subject: Presentation
Attachments: BNL Pres-PBA HP SRIV5Final-10 Dec12.pptx

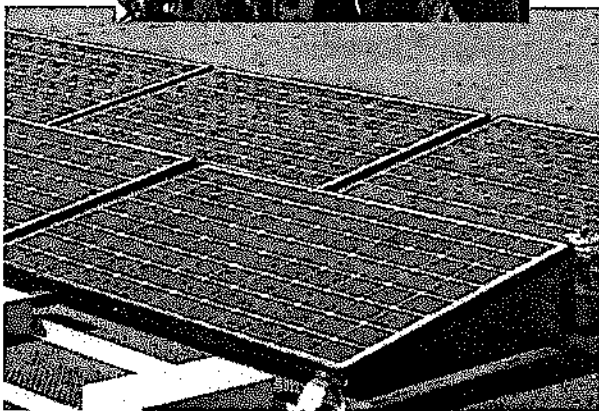
Justin, Is this the presentation that you loaded on the laptop for the Council Meeting on Monday evening? Just double checking. mp

*Mark R. Peterson
City Manager
Town of Normal
Normal, IL 61761
(309) 454-9777
mpeterson@normal.org*

"Committed to Service Excellence"



Please consider the environment before printing this e-mail



CENTER FOR RENEWABLE ENERGY

Illinois State University

David G. Loomis, Ph.D.
Director, Center for Renewable Energy
Professor of Economics
Illinois State University



ILLINOIS STATE UNIVERSITY

Illinois' first public university

The Center for Renewable Energy is a research and public service unit formally recognized by the State of Illinois. It was approved by the Illinois State University Board of Trustees in November, 2007, and by the Illinois Board of Higher Education in August, 2008.

Director:

Dr. David Loomis, Department of Economics

Associate Directors:

Dr. Jin Jo, Department of Technology

David Kennell, Department of Technology

Dr. Randy Winter, Department of Agriculture

Staff:

Matt Aldeman, Senior Energy Analyst

Pam Fuller, Office Manager

Janet Niezgoda, Marketing & Events

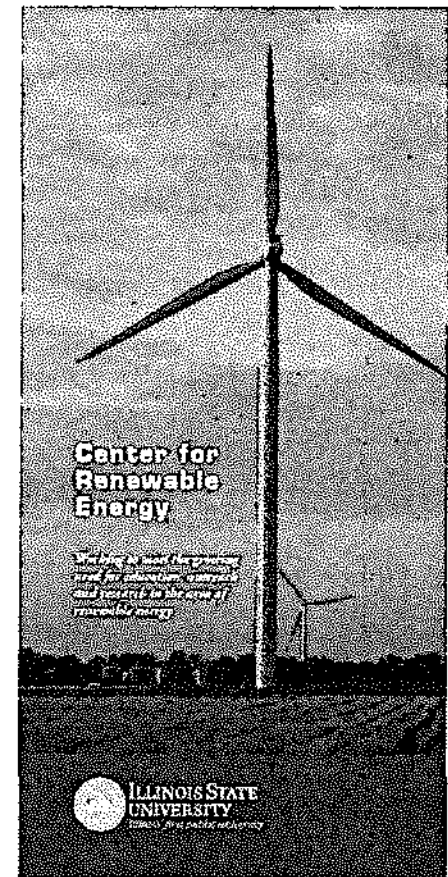


CENTER FOR RENEWABLE ENERGY

Illinois State University

Three major functional areas:

- Enhances the renewable energy major at Illinois State University.
- Serves the Illinois renewable energy community by providing information to the public.
- Encourages applied research concerning renewable energy at Illinois State University and through collaborations with other universities.



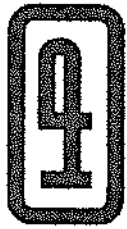


CENTER FOR RENEWABLE ENERGY

Illinois State University

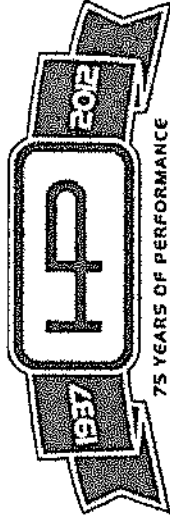
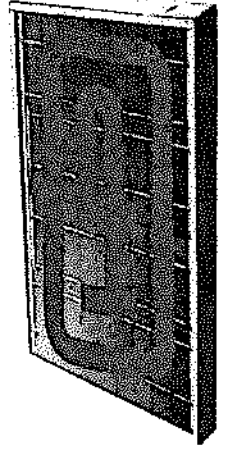
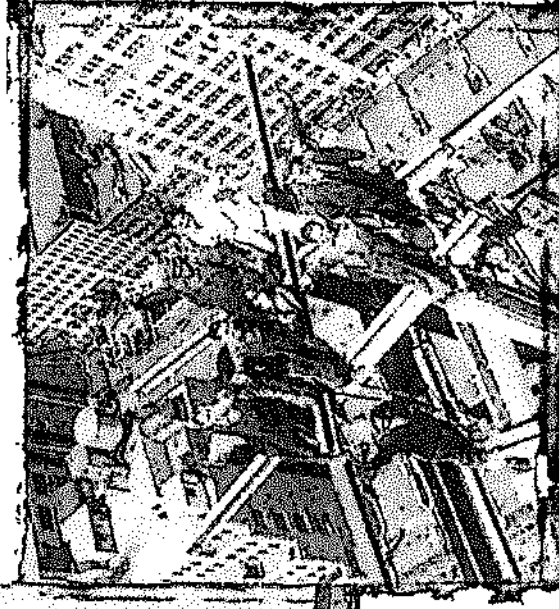
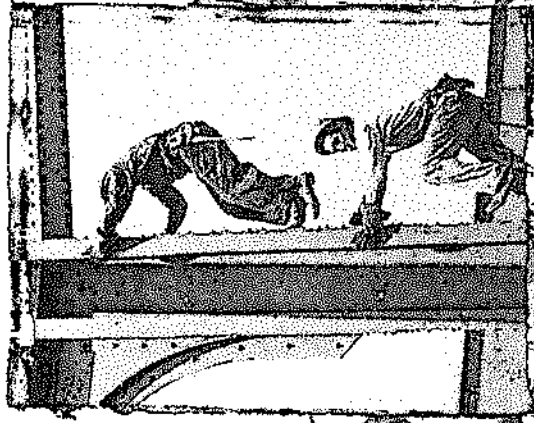
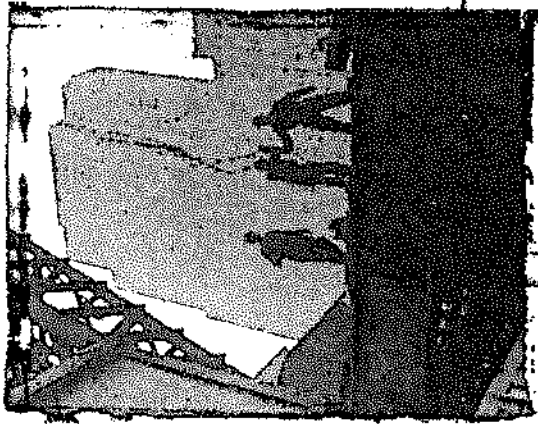
Major Activities:

- Leads the Energy Learning Exchange as part of the Illinois Pathways STEM Education Initiative designed to support college and career readiness for all students.
- Administers the Illinois Wind Working Group affiliated with the U.S. Department of Energy's Wind Powering America state groups.
- Works as part of the team in coordinating the Illinois Wind for Schools program.
- Develops Economic Impact of Wind and Solar Energy in Illinois Reports.
- Received grants totaling over \$2,270,000.

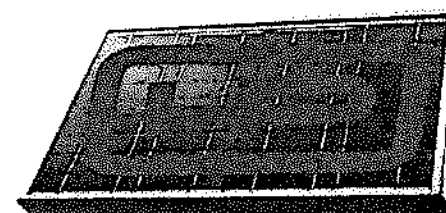
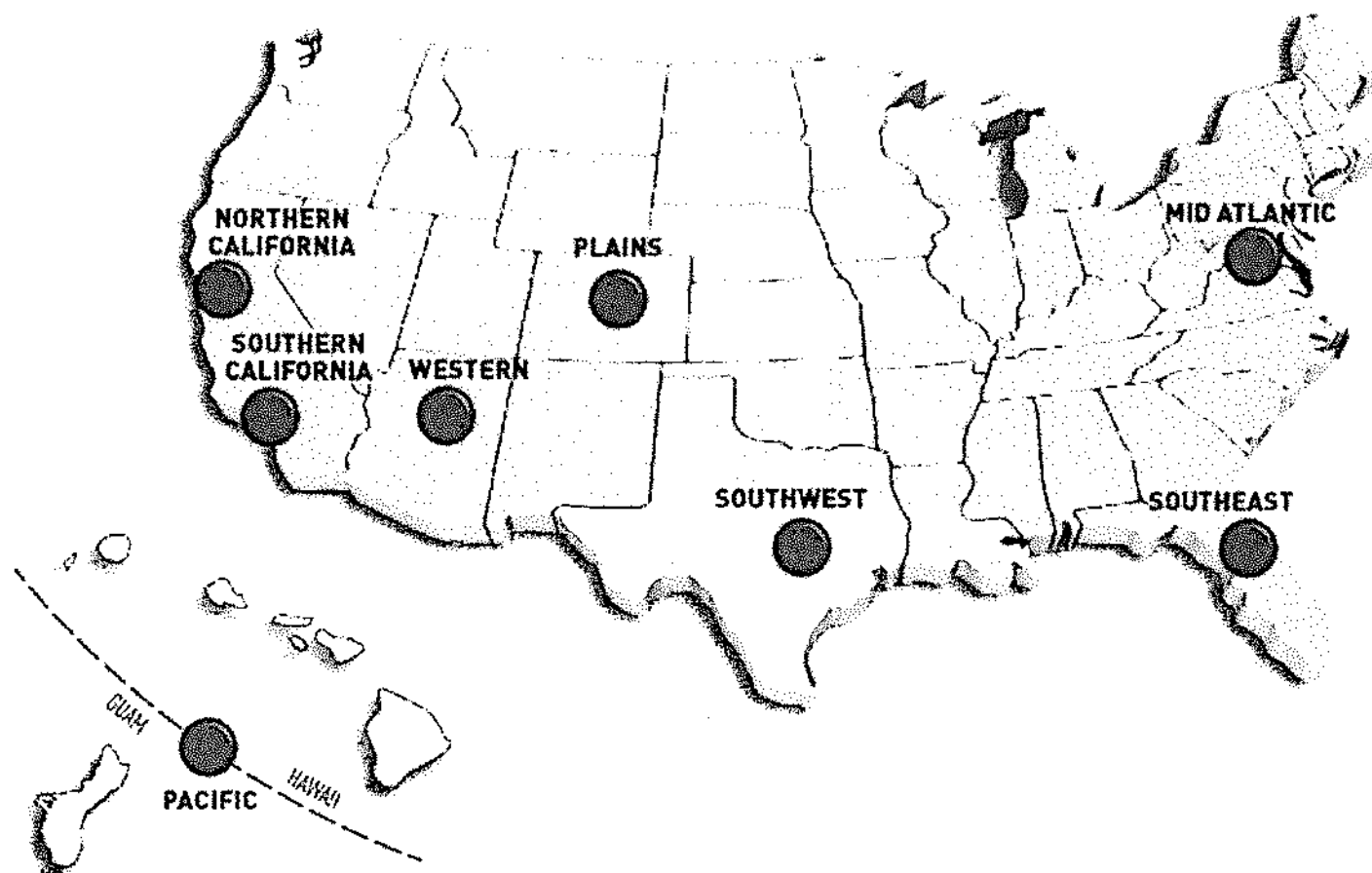


Hensel Phelps Construction Co.

Founded in Greeley, Colorado in 1937

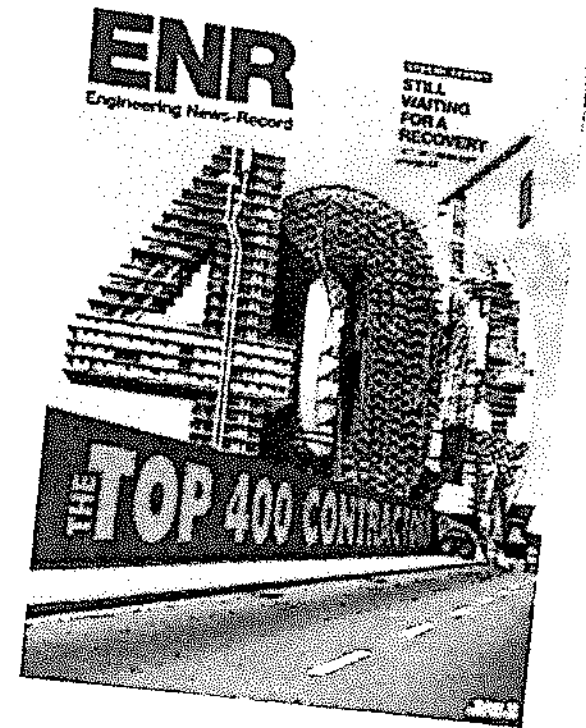


District Office Locations

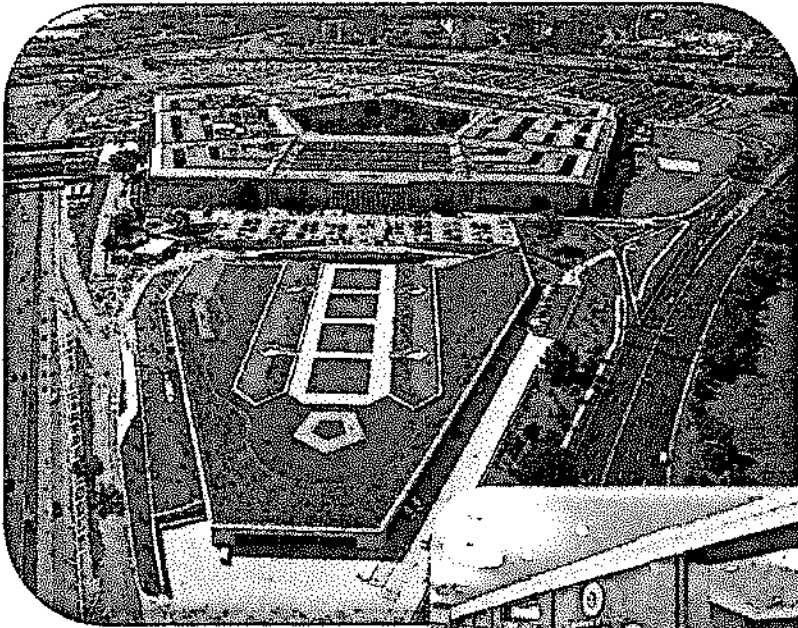


Engineering News Record Magazine Ranking

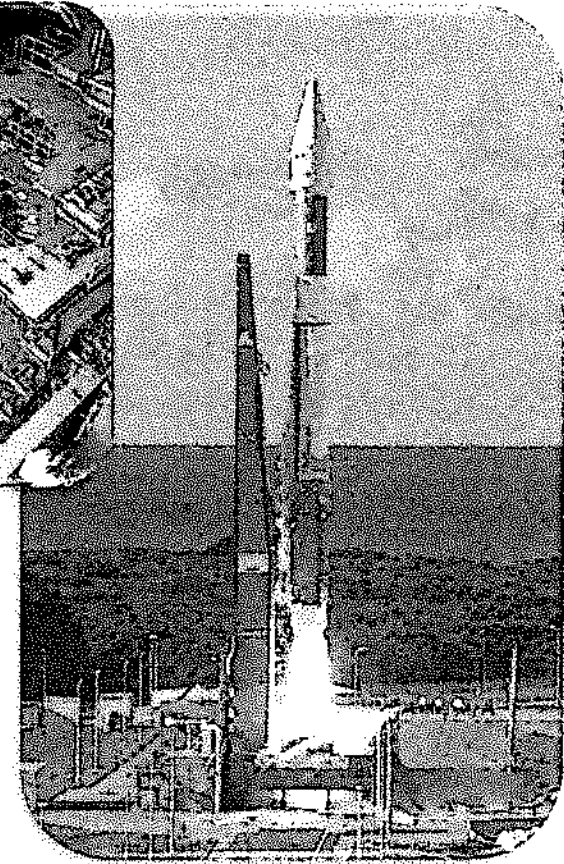
- *Ranked #4 among the Top 100
Green Contractors*
- *Ranked #1 in Government Offices*
- *#23 Among the Top 400 Contractors*
- *#13 Among the Top 10 Design-Build
Firms*



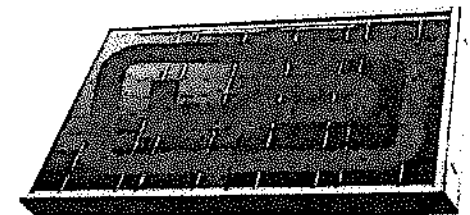
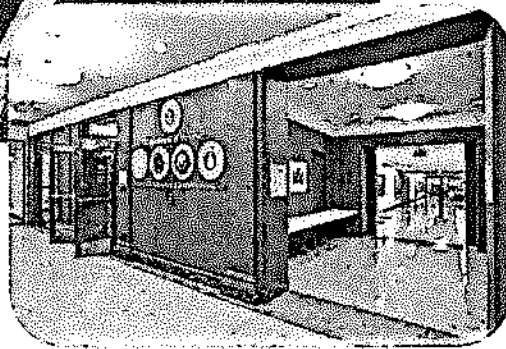
Project Experience



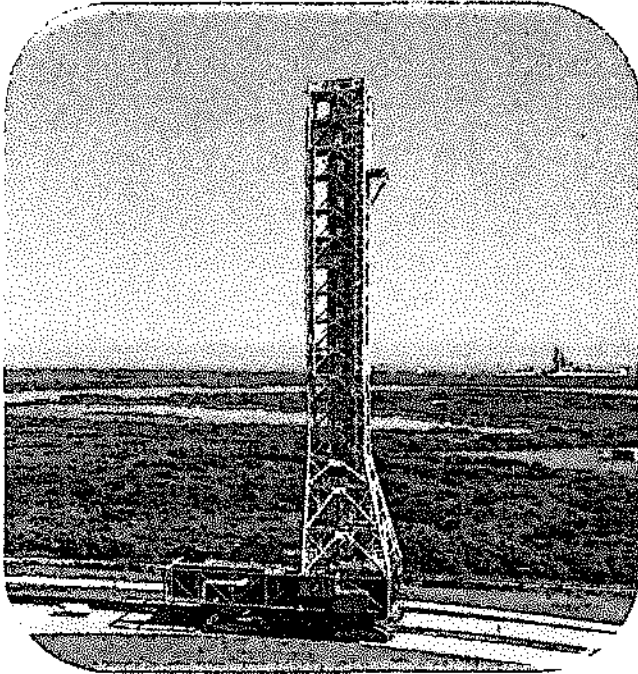
Pentagon – Renovation Wedges 2 - 5
Arlington, VA



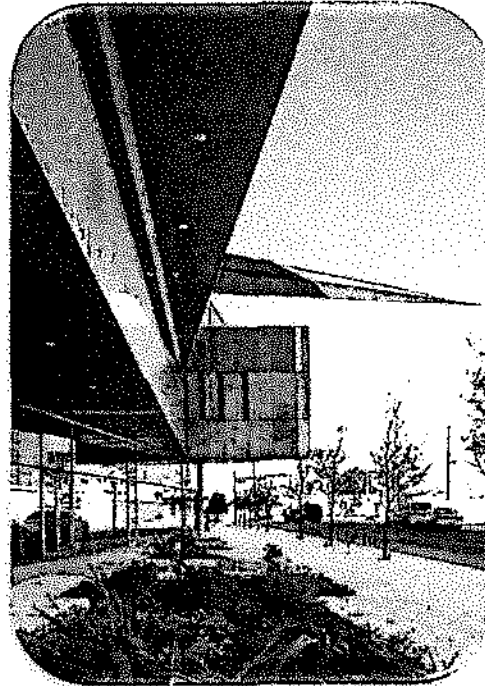
Evolved Expendable Launch Vehicle, Cape
Canaveral Air Station, FL



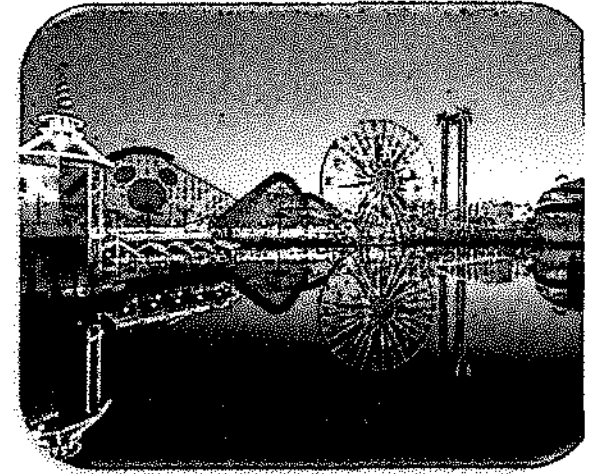
Project Experience



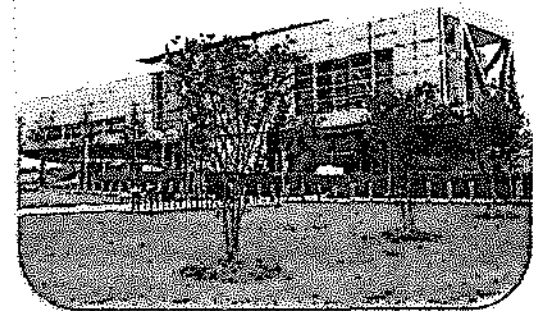
NASA Mobile Launcher, Kennedy
Space Center, FL



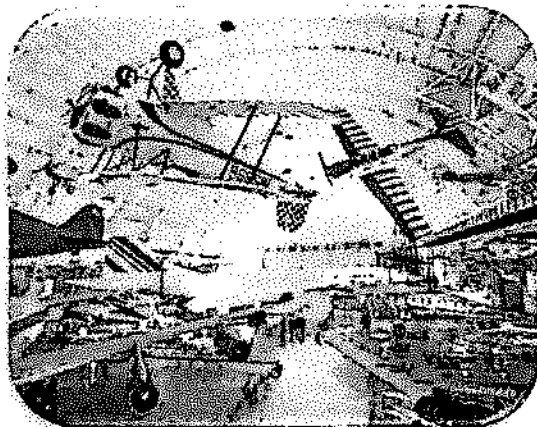
Austin City Hall and Public Plaza,
Austin, TX



Walt Disney Paradise Pier
Anaheim, CA



William J. Clinton Presidential Library and
Museum, Little Rock, AR

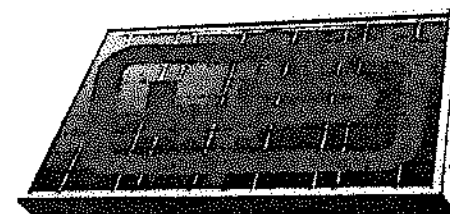


Steven F. Udvar-Hazy Center,
National Air & Space Museum
Chantilly, VA



Renewable Energy Work

- LAUSD Elementary School #22 - Playa Vista, CA
- NAVFAC Miramar Hangars - Miramar, CA
- Long Beach Unified School District - Long Beach, CA
- Harbor UCLA - Torrance, CA
- Adelanto ICE Processing Center West - Adelanto, CA
- Barstow Machine Shop - Barstow, CA
- Camp Pendleton BEQ 8 - Camp Pendleton, CA
- San Ysidro US Land Port of Entry - San Ysidro, CA
- Pomona College Biology Building – Claremont, CA
- Guam NAVFAC BEQ - Agana, Guam
- UAS Maintenance Hangar - Holloman AFB, NM
- National Solar Power - Melbourne, FL
- Waste to Energy Partners - Orlando, FL
- where we're working
- THAAD Battery II TEMF - Fort Bliss, TX
- Austin Central Library - Austin, TX
- SERC Mathias Laboratory - Edgewater, MD
- Beaufort Hangar - MCAS Beaufort, SC
- BAMS TE Hangar - Patuxent River NAS, MD
- North Campus Utility Plant - Annapolis, MD
- SCI Benner Township - Benner, PA
- Joint Base Charleston MFH - Charleston, SC
- Arnold AFB MFH - Arnold AFB, TN
- Red Hill Tunnel - Honolulu, HI



Wendy Briggs

From: Mark Peterson
Sent: Thursday, January 03, 2013 9:14 AM
To: David Hales (dhales@cityblm.org)
Subject: Proposed meeting regarding Allied Waste & Paradigm

David, Sandy took a call this morning from your assistant (Bobby) seeking to schedule a meeting to discuss "Allied Waste Contract & Paradigm BioAviation." Your assistant requested that several Town staff attend that meeting including me, Pam Reece, Steve Mahrt, Andrew Huhn, and Robin Weaver to be held on either Jan. 18 or 25. Before I commit to sending all of those people to this meeting, I would like to get a little more information about the purpose.

Just so you know, we are poised to extend our contract with Allied Waste (now called Republic Services) for one year starting on March 1, 2013. They have offered a 3% rate increase. Robin Weaver tells me that Jim Karch has also participated in the contract extension discussions with Republic since our contracts expire at the same time. It is her understanding that Jim will be recommending that the City follow suit and approve an identical extension agreement for one year. We have tentatively planned to place this item on our Council's Jan. 22nd regular meeting agenda. Thanks, mp

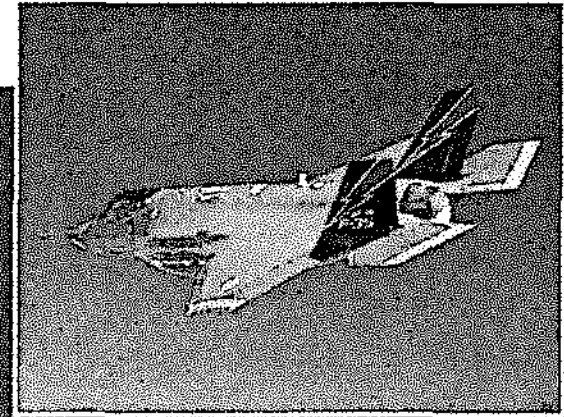
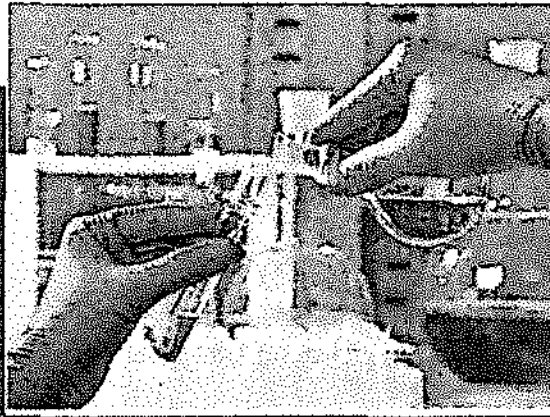
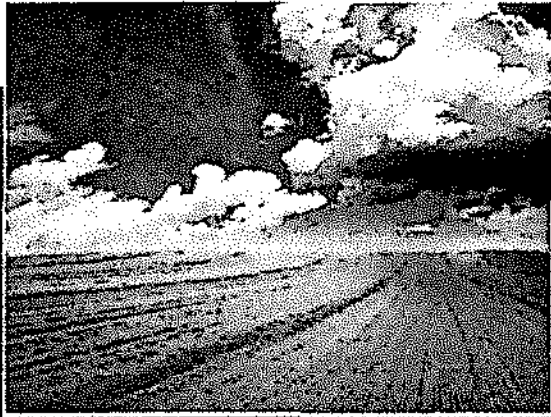
Mark R. Peterson
City Manager
Town of Normal
Normal, IL 61761
(309) 454-9777
mpeterson@normal.org

"Committed to Service Excellence"



Please consider the environment before printing this e-mail

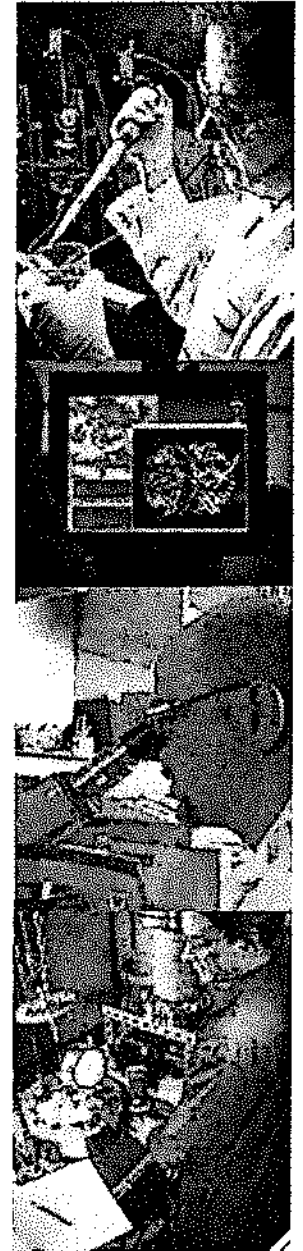
SOUTHERN RESEARCH INSTITUTE



**Southern Research Micro-Thermochemical
Platform for Waste to Energy Applications**

Southern Research Institute

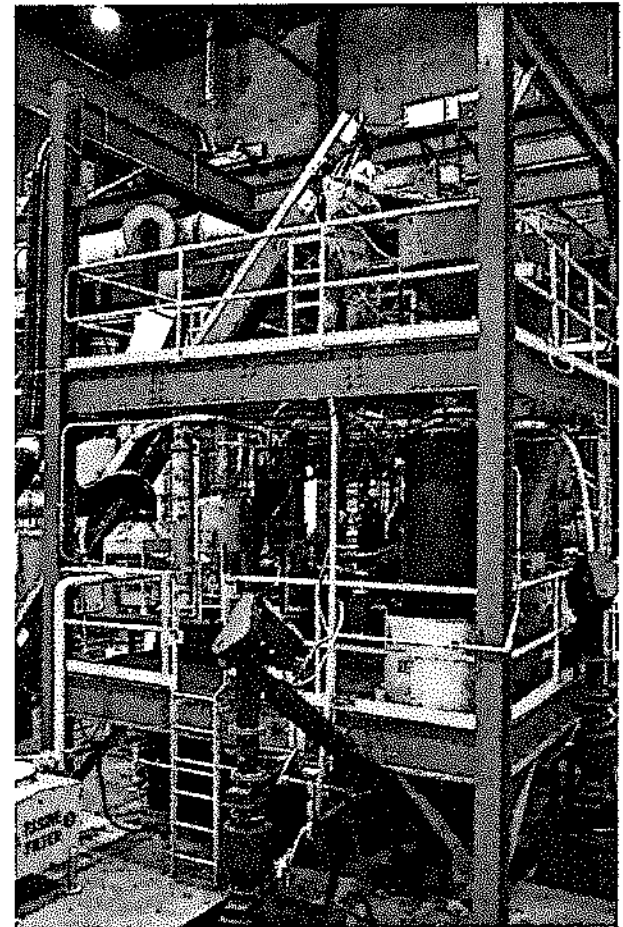
- Established in 1941 as an independent, not-for-profit (501-c-3) center for scientific research and development
- Headquartered in Birmingham, Alabama
- Revenues of \$82.5 million in 2011
- Staff of over 500 employees
- Organized into three divisions:
 - Engineering, Environment, and Energy
 - Drug Discovery
 - Drug Development (pre-clinical)



SOUTHERN RESEARCH
INSTITUTE

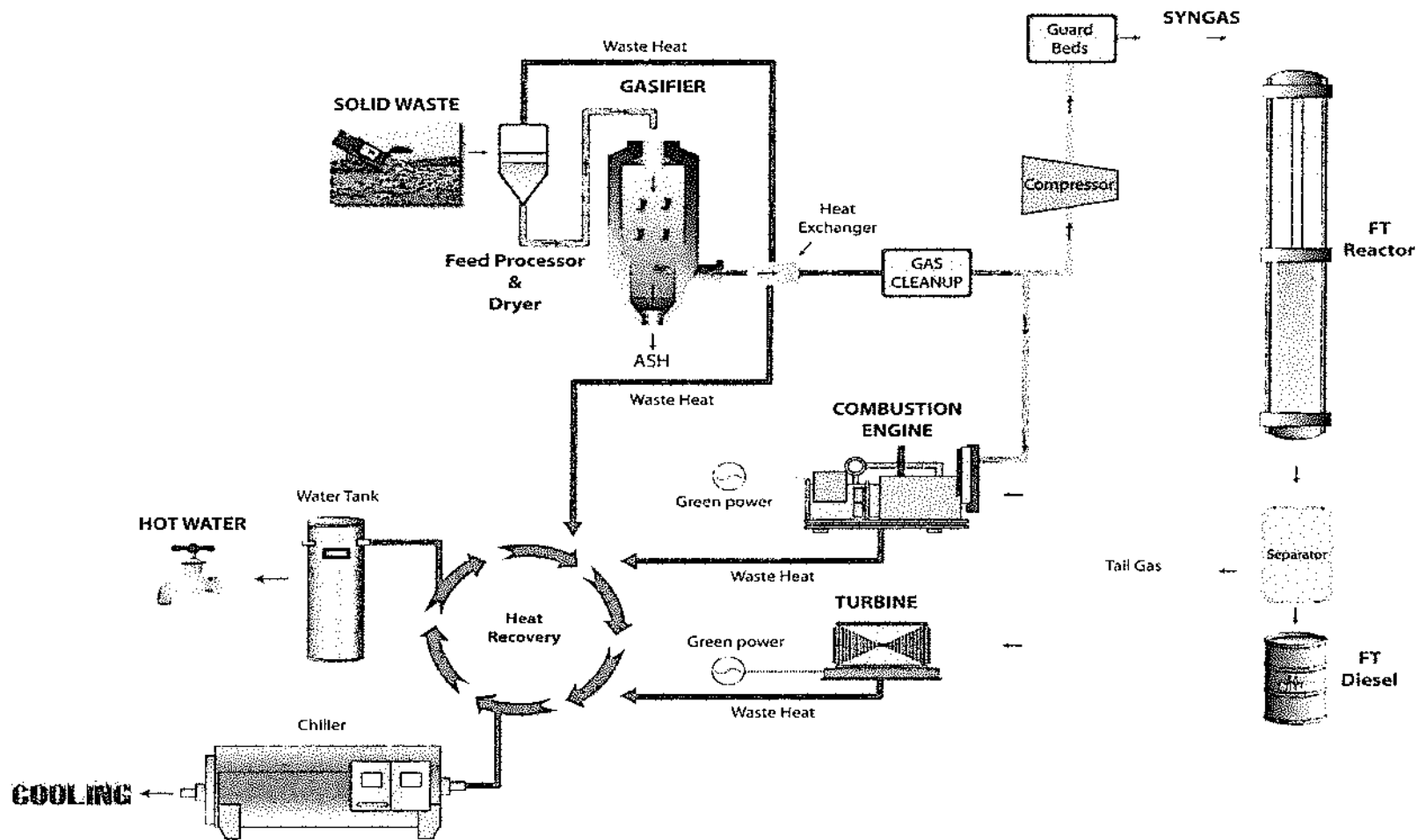
Southern Research Micro-Thermochemical Platform

- In 2012 \$4M committed by Southern Research for pilot development
- Green electrical power, biofuels, hot water, cooling, biochar
- Small distributed plants (1-200 tpd)
 - Reduced feedstock requirements and logistics
 - Reduced transportation distances and associated diesel use
 - Reduced capital cost and permitting requirements
 - Direct marketing of products in plant vicinity
 - Economic development for rural and under-developed areas

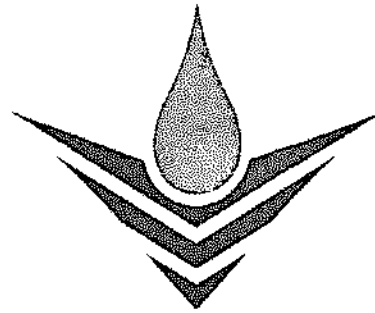


**SOUTHERN RESEARCH
INSTITUTE**

Modular Integrated System



SOUTHERN RESEARCH
INSTITUTE



ParadigmBioAviation

**Transforming
Municipal Solid Waste
into
*Renewable Bio-Jet Fuel***

Bloomington – Normal, Illinois

Alan Robinson, President & CEO – AlanR@paradigmbioaviation.com

10 December 2012



Presentation Team

Paradigm BioAviation LLC

Alan Robinson – CEO

Orval Yarger – Director

Lester Wm Vicary – Director of Business Services

Dr. Steven Johnson – Head of Process Research & Technology Integration

Doug Nord – Chairman Paradigm Advisory Board

Hensel Phelps Construction Co

Ian Spangler – Project Manager

Southern Research Institute

Tim Hansen – Director of Advanced Energy & Transportation Technologies

ISU

Prof. David Loomis – Director, Center for Renewable Energy,
Executive Director, Institute for Regulatory Policy Studies



Our Mission Statement

The Production of Alternative Fuels and Power for commercial, corporate and military markets through deployment of Bio-Synthetic fuel production technologies into regional Integrated Biofuel Refineries (IBR's) using locally available feedstock, to:

- Converting organic waste (Agro & MSW) to Liquid Fuels and Power
- Empower communities with green options for Energy & Jobs
- Facilitate Zero Landfill growth & single stream recycling
- Significantly reduce dependence upon imported fossil fuels.
- Buffer military against Peak Oil with local fuel production
- Reduce aviation carbon emissions to ICAO objectives



ParadigmBioAviation

10 December 2012

Paradigm's – Our Roots

We are historically an Aviation, Telecommunications, Chemicals, Pharmaceutical, Property and infrastructure Group – USA, UK and Europe.

➤ Aviation – Owned, operated, & designed regional commercial airports and FBO's in UK, Europe and South Atlantic plus part 91 & 135 operations –30 yrs experience

➤ Telecommunications – Owned & operated Telephony, Cable TV, Submarine cable and Wireless – founded Telewest (UK) which IPO'd for £1.4bn –24 yrs experience

➤ Chemical & Pharmaceutical – Managed plants in USA and Europe – 25yrs

➤ Infrastructure construction– Middle East & Europe – regional power generation, roads, Airports, telecoms systems –land, submarine, wireless, and IDC's



ParadigmBioAviation

10 December 2012

Our IBR Teaming Partners

Hensel Phelps Construction Co

Our EPC and General contractor

Southern Research Institute

Our Gasification and GTL technology
development supplier

Illinois State University ISU

Our Economics and Feedstock Research provider



ParadigmBioAviation

10 December 2012

Paradigm's MSW to Alternative JetFuel Timeline

For MSW to Alternative Aviation Fuels & Power IBR plant in Bloomington, IL

Preparation and Development Phase

- 2006 – Investigate Carbon CO² reduction in Coventry Airport, operations, UK
- 2009 – ACI Europe launches Airport Carbon Accreditation ACA program at AGM.
- 2009 – EU commission announces EUETS tax on aircraft emissions will take effect in January 2012.
- 2010 – Paradigm moots vertical integration for Airport & Aircraft Carbon Emission reductions with production and use of Alternative Fuels instead of CER credits for planting “Trees in Brazil”
- 2010- 2011- Extensive research into feedstock, Algae, Jatropha, Camalina, Switchgrasses, Wood Pellets, and Organic Wastes – Crop and MSW
- 2011-2012 – Working from AIRCRAFT BACKWARDS - *Research supply chain risks*, feedstock types & availability, production methods, site locations, airport storage, blending and inter-plane infrastructure



Paradigm's MSW to Alternative JetFuel Timeline

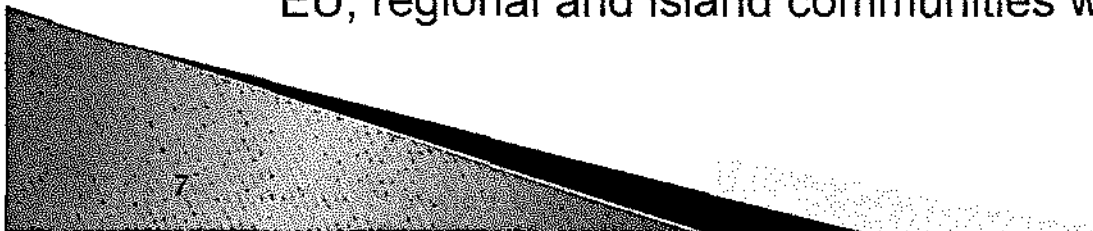
For MSW to Alternative Aviation Fuels & Power IBR plant in Bloomington, IL

Permitting, Construction and Operational Phases

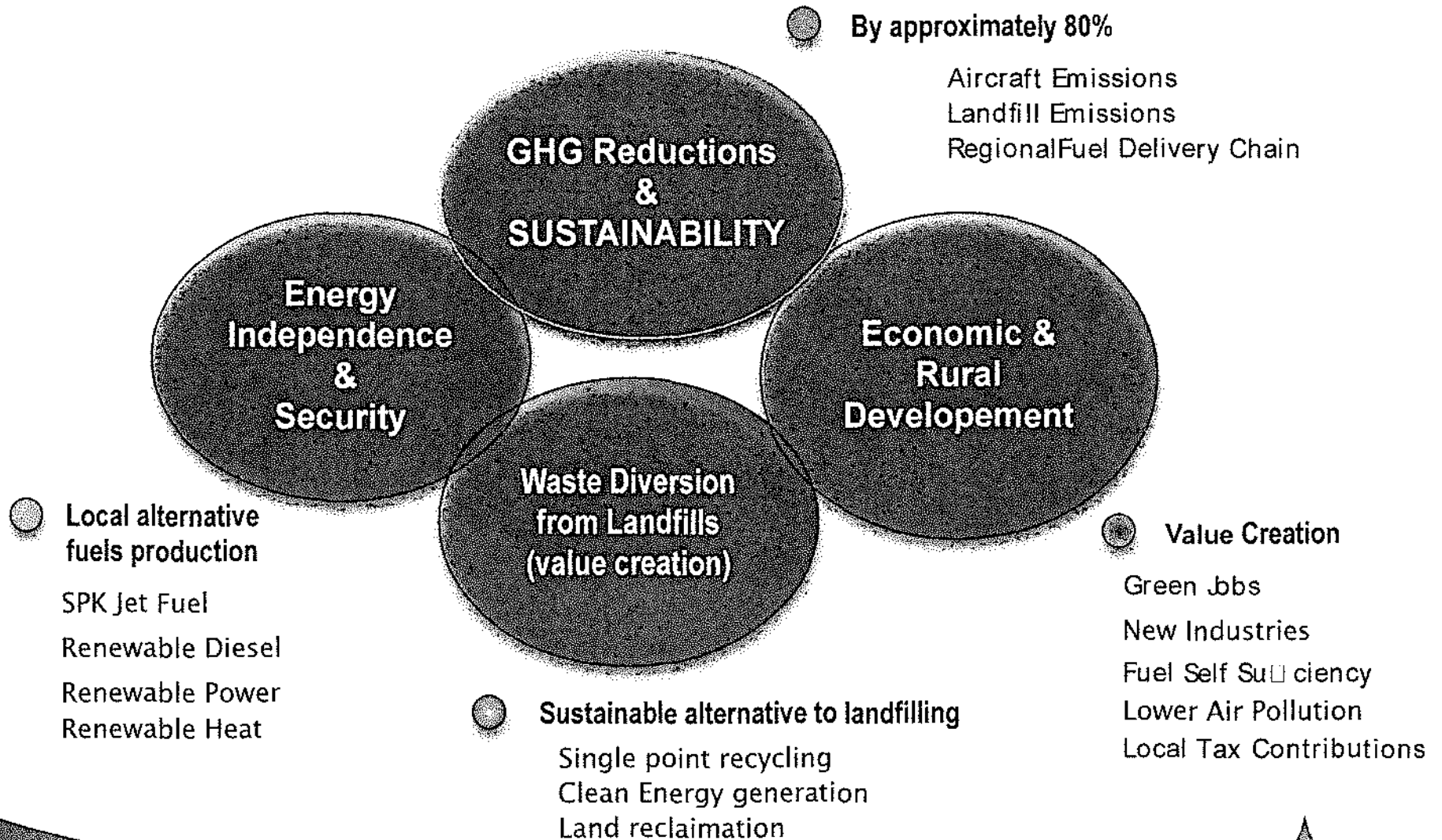
- 2012 – Secured land, feedstock availability, off-take agreements, technology options, modeling, risk mitigation and routes to market.
- 2013 – site permitting, interconnection studies, EPC work, bond funding, etc.
- 2014- 2015 Construction & commissioning for MRF, Gasification, Power & GTL Pilot
- 2016 – BNL Landfill closes - Start Full commercial operation of MRF, Power & RDF plus GTL pilot
- 2017 – Commercial Alternative fuels plant constructed – based on cost scalability of GTL
- 2018 – Full production of alternative aviation fuels – JetA, 100LL, Diesel & Gasoline
- 2017 – Replication of Paradigm MRF/IBR facilities in in USA, UK and EU, regional and island communities with airports



ParadigmBioAviation



Paradigm's Answer to Aviation Emissions Challenges



ParadigmBioAviation

10 December 2012

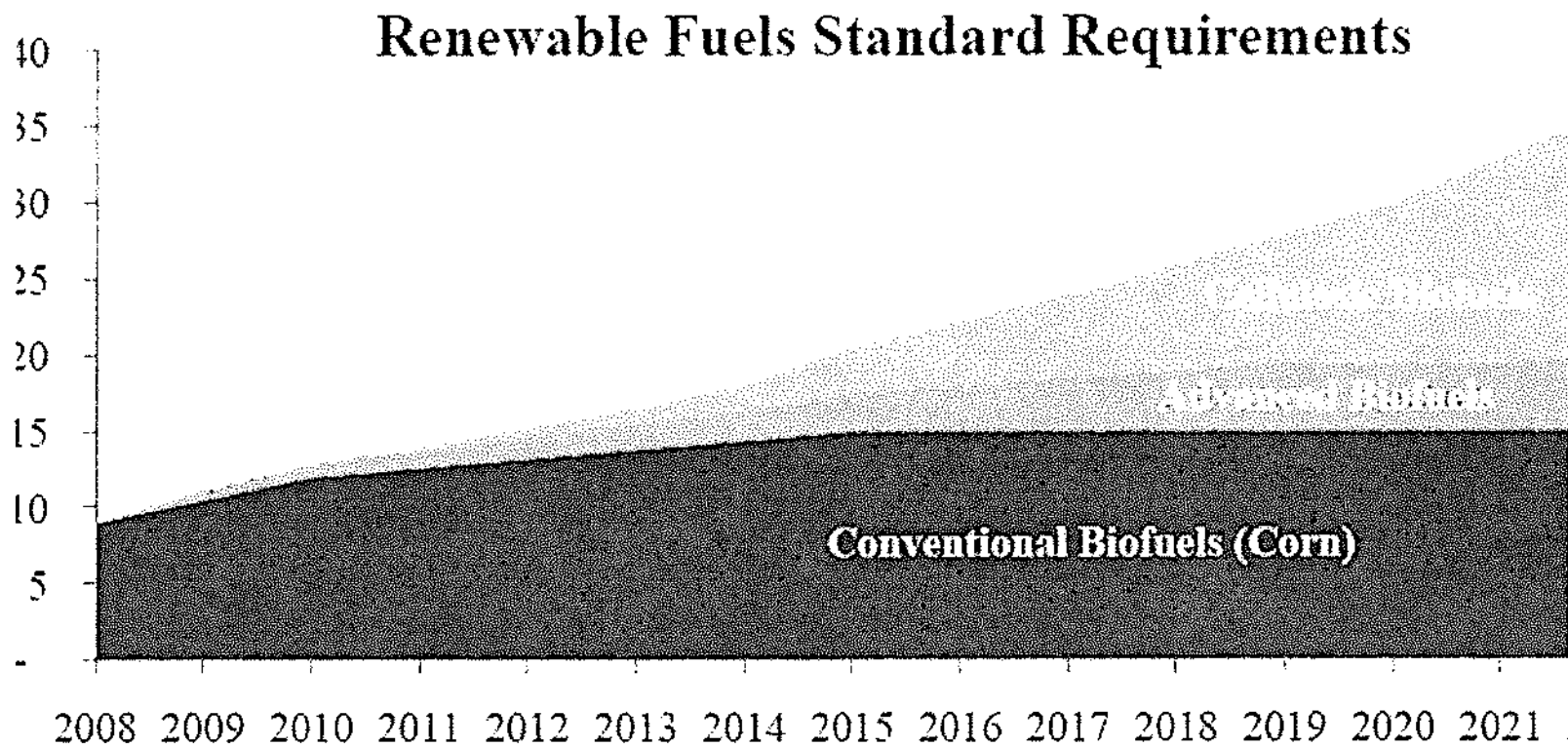
Why now – Global and Economic Drivers

- Peak Oil– It's going to happen, its only a matter of time – early adoption is a must.
- Commercialization of IBR technology has been a long process
- Regional fuels production is a new paradigm (& window of opportunity)
 - Obtaining sustainable local feedstock is crucial.
 - Zero new landfills is being socially responsible
- Support & Consensus with State & Local government as is essential.
- Additional airport & upgrade infrastructure will be required to meet future Carbon Neutral aviation needs.



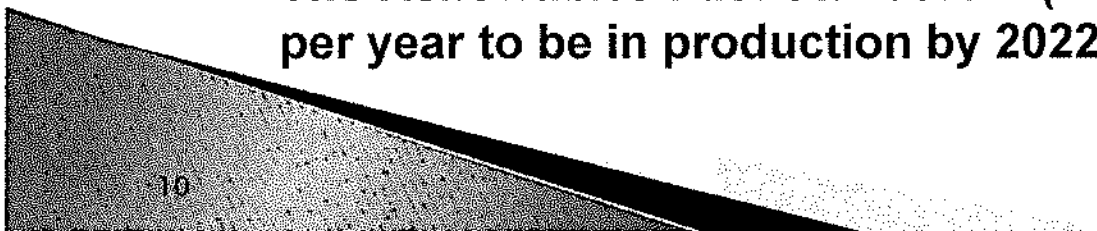
ParadigmBioAviation

RFS2 (EPA) Calls for 36bn gpy by 2022

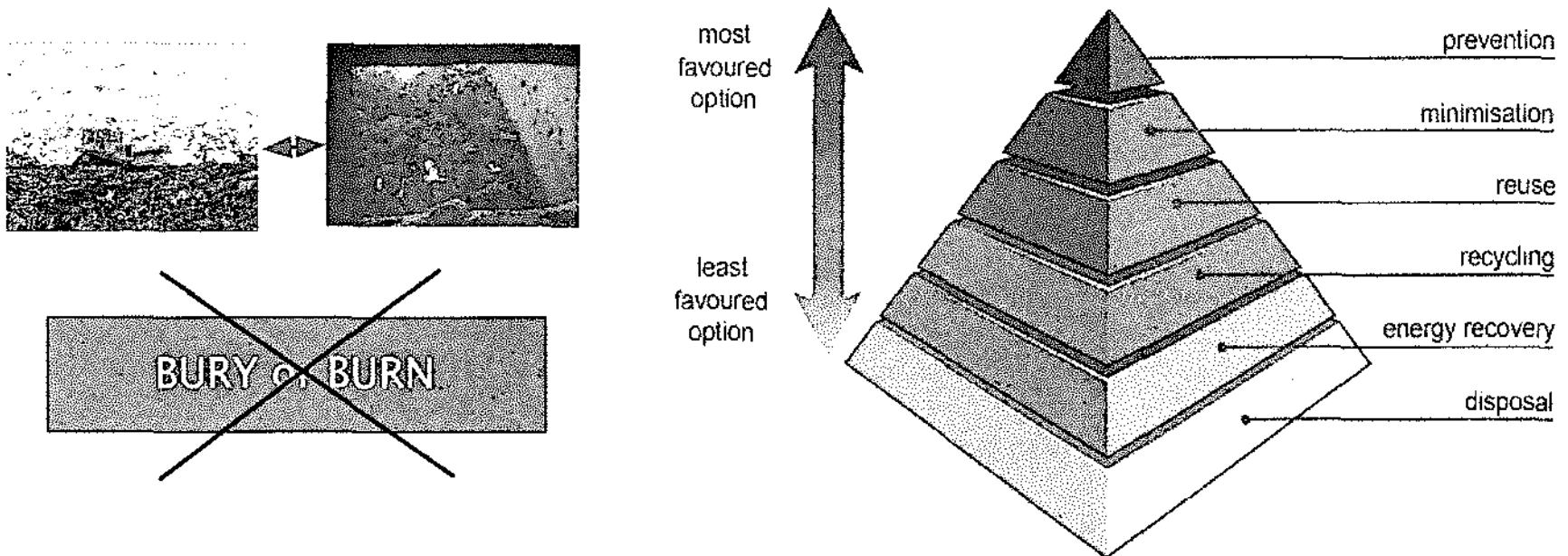


Source: H.R. 6 – Energy Independence and Security Act of 2007

The Renewables Fuel Standard 2 (RFS2), Calls for 36bn gallons per year to be in production by 2022



MSW Becomes an Alternative Fuel



Chemical Reformation Plant rearranges molecules to specified liquid fuel

Source APP



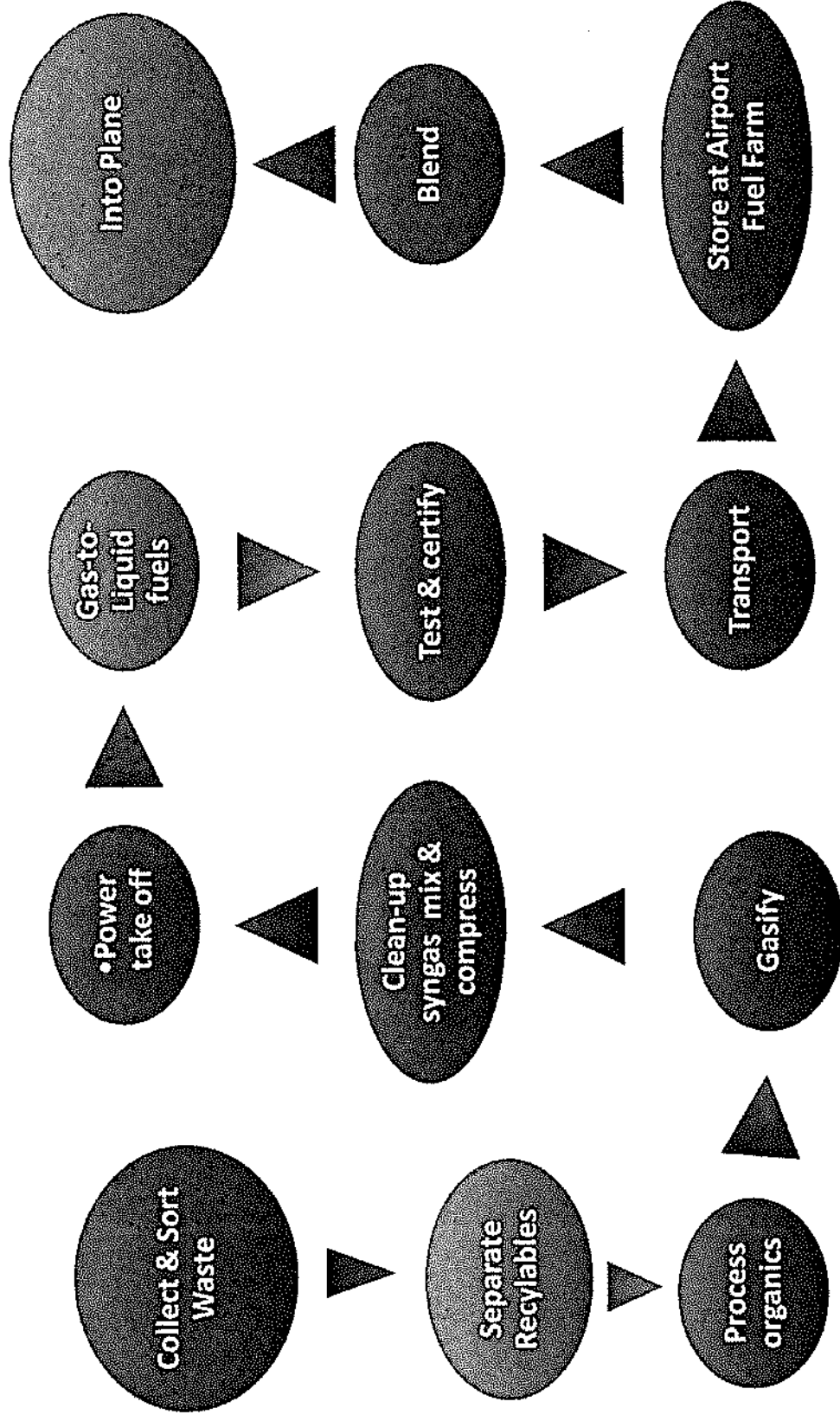
ParadigmBioAviation

10 December 2012

PARTNERSHIPS FOR BNL PLANT CONSTRUCTION

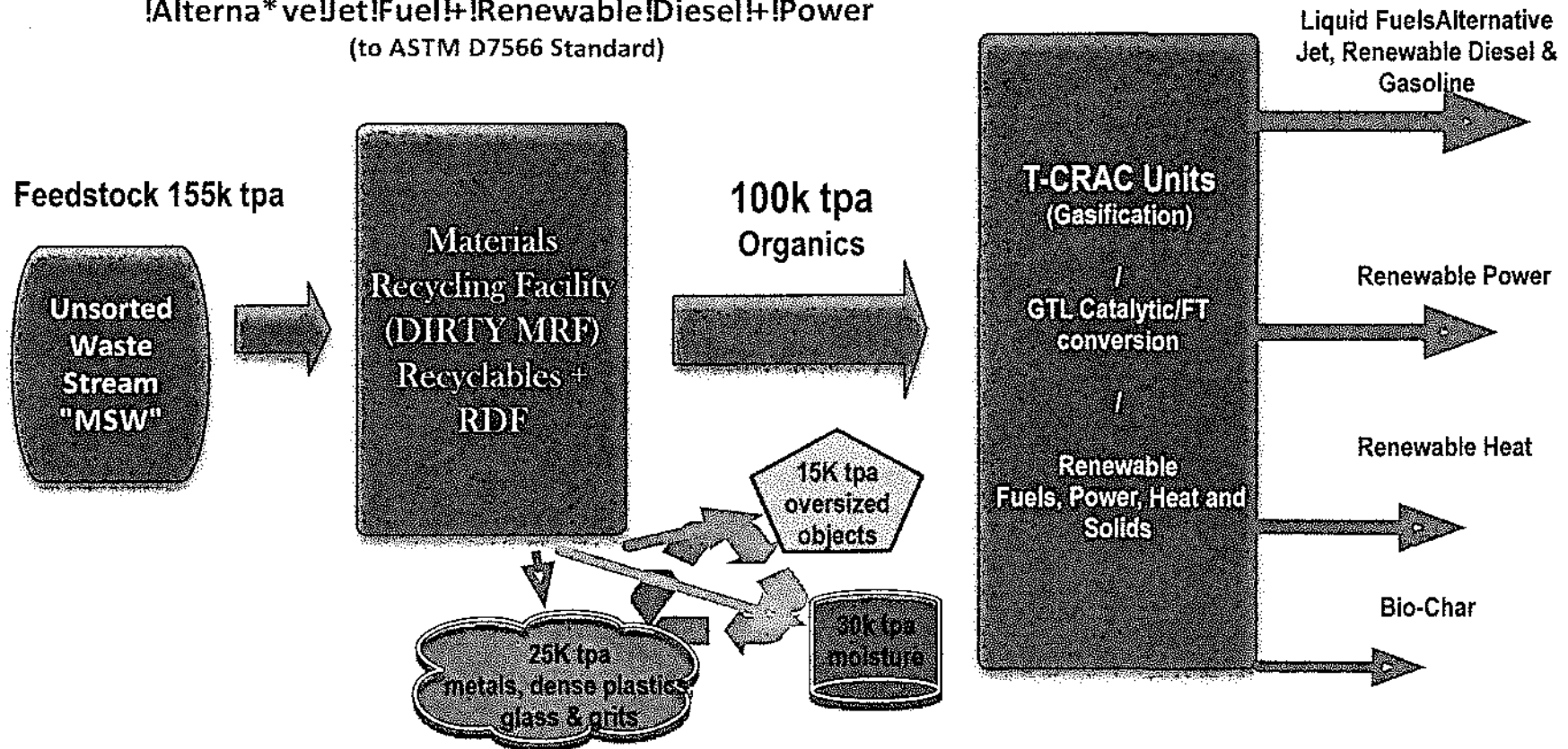


PARADIGM'S SELECTED PROCESS



FULL COMMERCIAL PLANT- 330 tpd

*MSW Waste / IA Thermochemical Carbon Reforming & Cogeneration to
Alternative Jet Fuel + Renewable Diesel + Power
(to ASTM D7566 Standard)*



Liquid Fuels - Alternative Jet Fuel , Renewable Diesel, & Gasoline - 8M gals

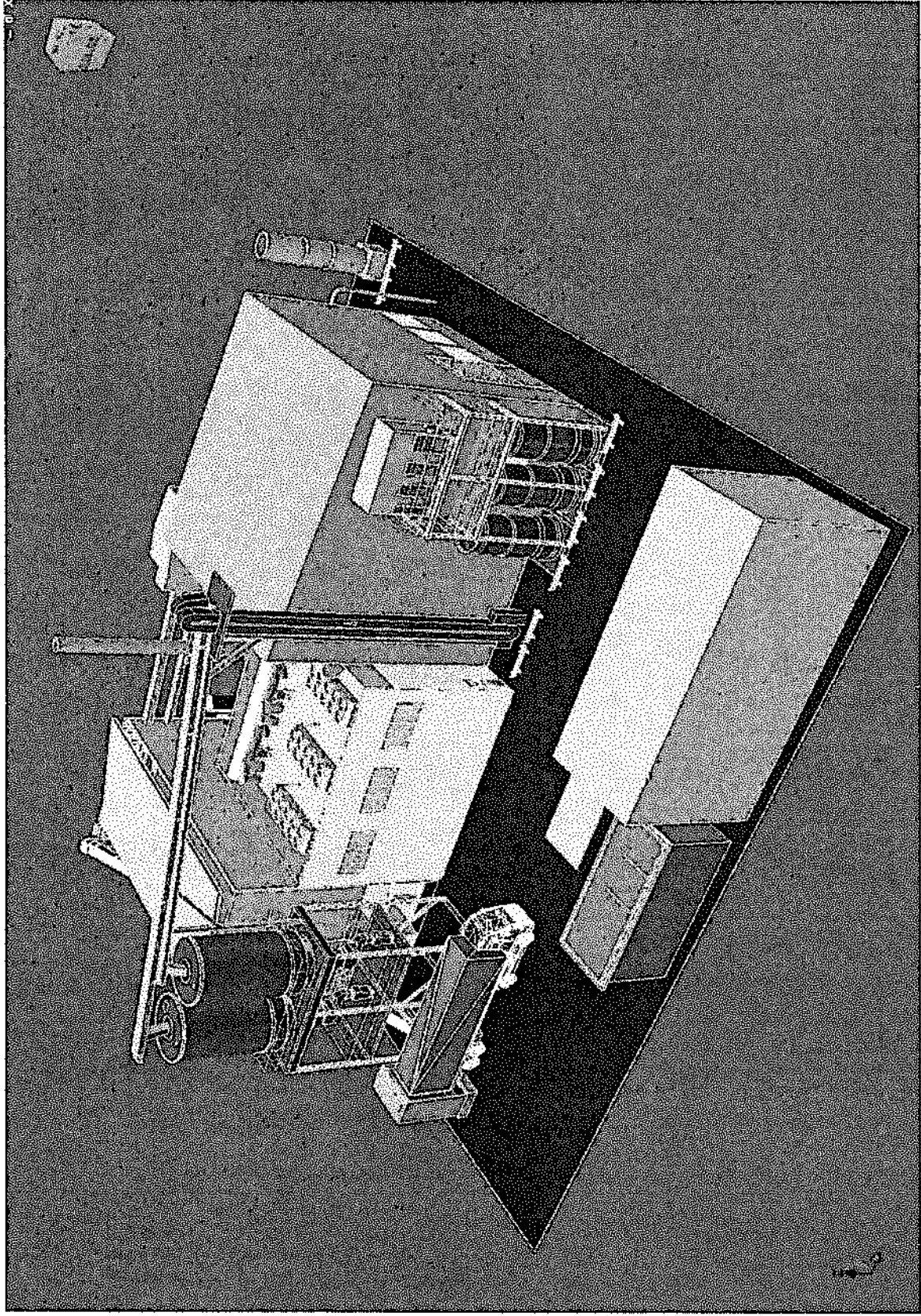
Renewable Electrical Power Generation - 5+MWhe

Bio-Char & Ash for fertilizers & building materials

Jobs Creation - Direct, Indirect & Induced - c.760 jobs



Concept Drawing of 11.7 MWe MSW to Power Plant



10 December 2012



Paradigm Aviation

10 December 2012

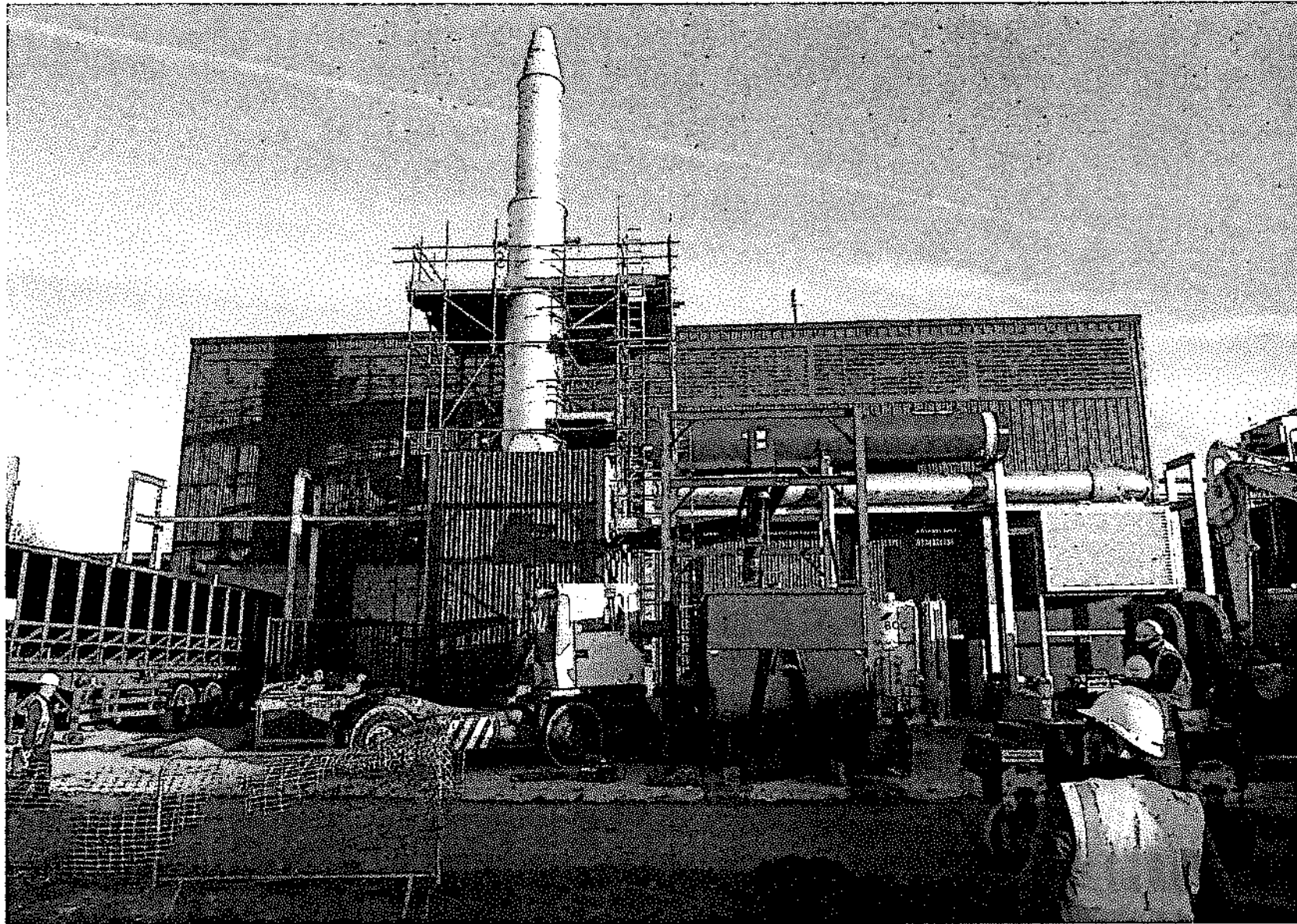
Concept Drawing of 11.7 Mwe with 6 gasifiers & generators



10 December 2012

10 December 2012

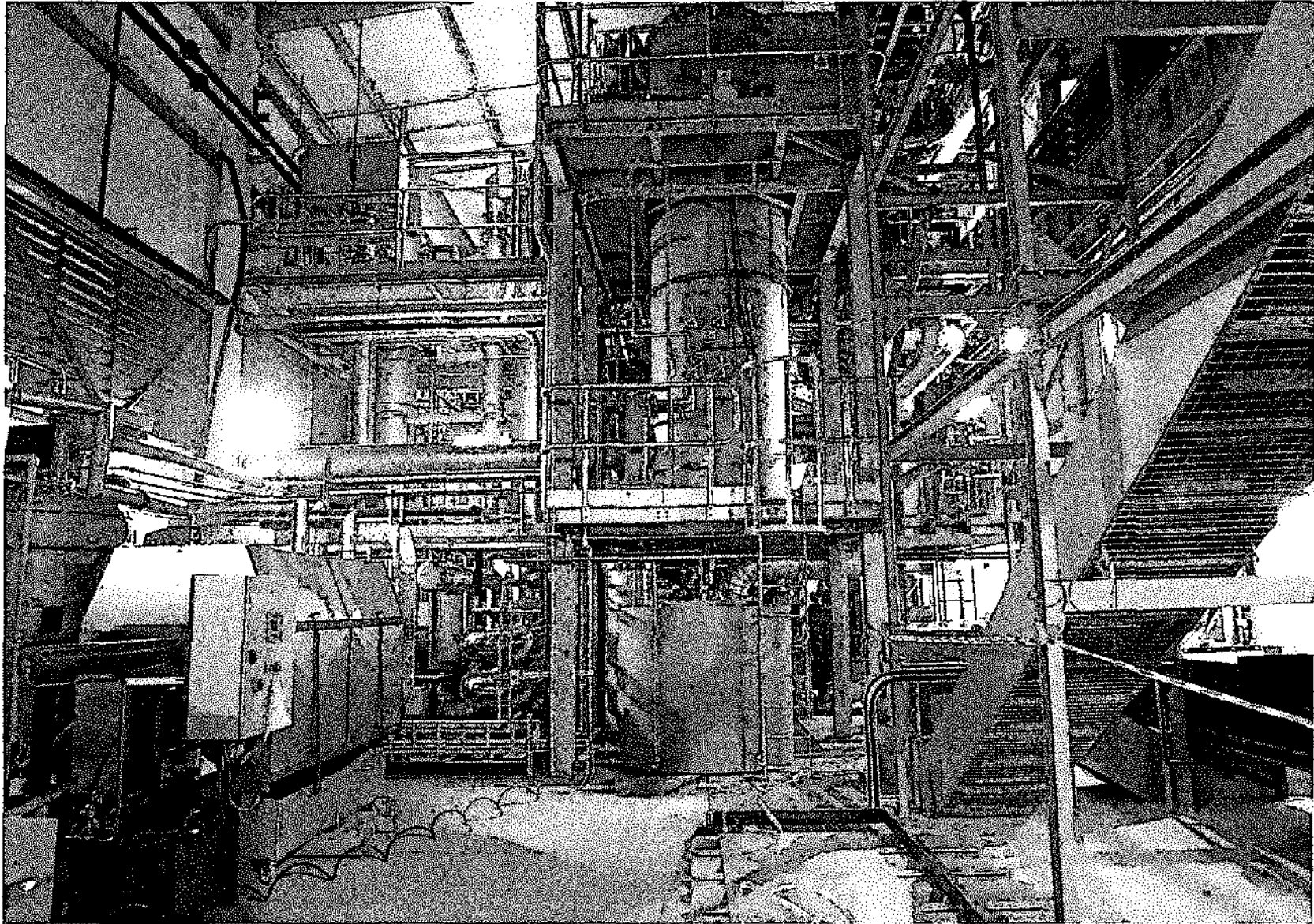
Actual 11.7 Mwe MSW to Power Plant at Nottingham UK



10 December 2012

10 December 2012

Gasifier section of Plant at Nottingham UK



Economics of Alternative Alternative Jet at BNL

- MSW is long-term sustainable feedstock
- Conversion to Alternative fuels is cost competitive to conventional fossil fuels
- Processing provides superior local recycling of metals, glass and plastics –reduces city operating costs
- Local production and local consumption reduces transportation costs and increases profitability
- Creation of 760+ direct, indirect & induced green jobs
- Circa 70% of \$120 million of construction materials and labor costs will stay in Illinois.
- Alternative Jet Fuel produced at BNL plant will reduce carbon emission by 150,000 tons



Benefits to Bloomington–Normal

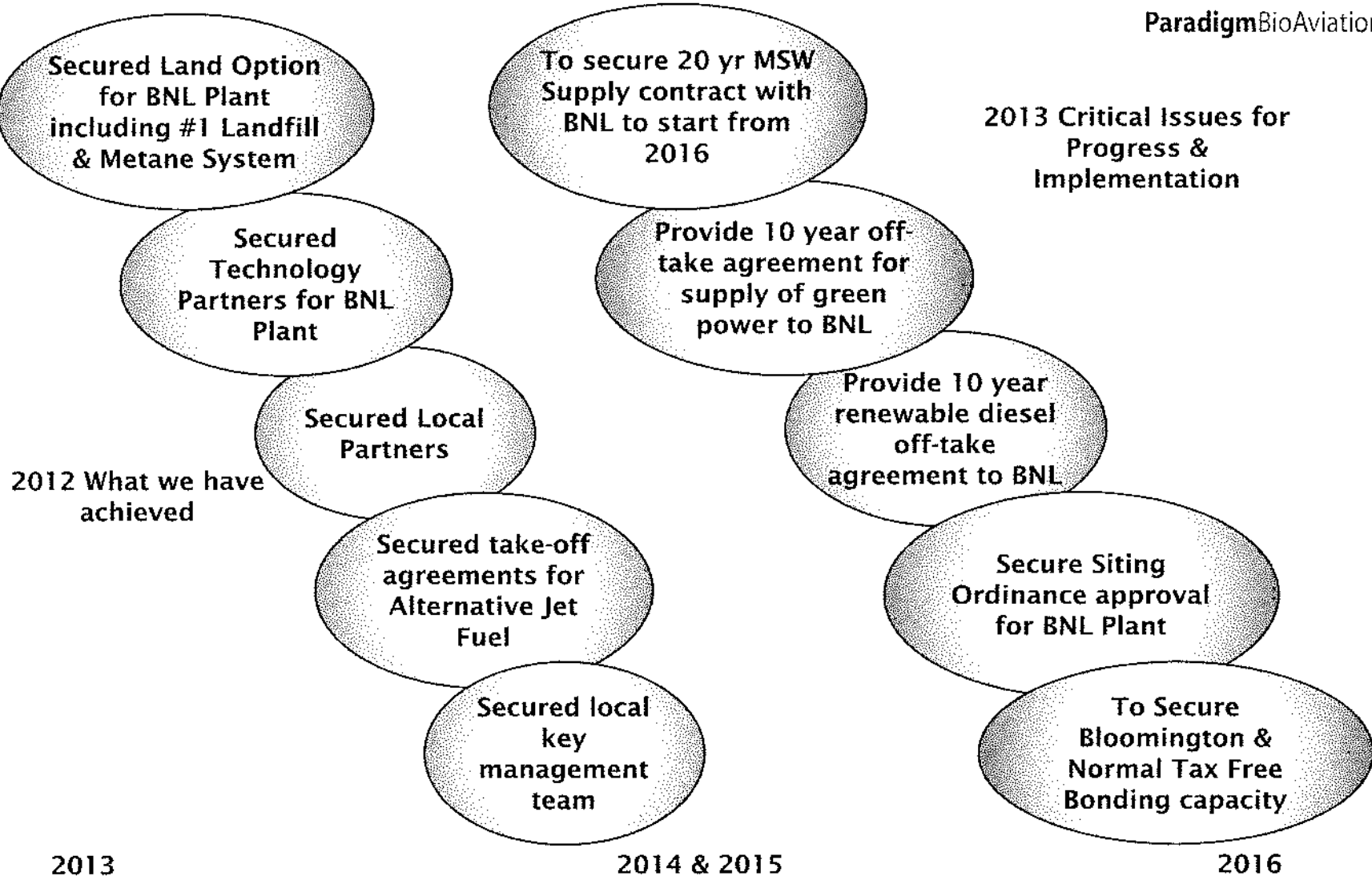
- **TOWARDS “ZERO LANDFILL”** – no need for new landfill post 2016
- **INCREASED EFFICIENCY** of recycling – Sophisticated MRF will increase recycling and the removal of materials from the present waste stream
- **POWER GENERATION** - opens possibility for GREEN MICRO-GRID for ISU and Electric Cars, for example
- **ALTERNATIVE FUELS** Production – Local availability of Alternative-Jet, Diesel & Gasoline reduces dependency on imported fuels, attractive to Airlines, cleaner environment
- **SPIN-OFF INDUSTRIES** – building and energy materials from bio-char and recycled waste
- **EMPLOYMENT** – Generates in excess of 700 Green Jobs
- **INWARD INVESTMENT** – c. \$120 million, 70% spent in Illinois
- **MULTIFACITED R&D Platform** – Long-term benefits for ISU and U of I and association with MIT/FAA/NASA
- **POSITIVE ECONOMIC IMPACT** to regional economy of c. \$200 million

Key Issues for 2013



ParadigmBioAviation

2013 Critical Issues for
Progress &
Implementation



Final Design & Permitting

Construction Phase 1

Phase 1 Operations

OPPORTUNITY FOR A GREENER FUTURE

- In 2013 Bloomington has the opportunity to embrace Energy Production & Materials recovery from its MSW and significantly reduce its CO₂ emissions

OR

- Continue to truck its MSW to distant landfills thereby increasing its Carbon Emissions and Carbon Footprint.



Wendy Briggs

From: Capparella, Angelo <apcappar@ilstu.edu>
Sent: Monday, December 17, 2012 1:49 PM
To: Mercy Davison
Subject: question re Paradigm Biofuels

Hi Mercy,

Is the Paradigm Biofuels idea a good one, or will it divert potentially recyclable waste to a less sustainable process? Will that be part of the analysis by Normal?

Thanks.

Angelo

Wendy Briggs

From: Mark Peterson
Sent: Friday, August 09, 2013 11:52 AM
To: Alan S M Robinson
Subject: Question

Alan, I received a call yesterday from a local guy named Donnie Herrin. He represented to me that he is working "with" or "for" Paradigm Aviation. He asked several questions about the north warehouse property and the proposed TIF. He asked me to send him information on the proposed TIF. I referred him to the attorney that is representing the property owners on the TIF negotiations (Tom Jacob). I am curious to know if Donnie is actually working for and/or with your company? If so, I would like to discuss his background with you. Thanks Alan! Mark

*Mark R. Peterson
City Manager
Town of Normal
Normal, IL 61761
(309) 454-9777
mpeterson@normal.org*

"Committed to Service Excellence"



Please consider the environment before printing this e-mail

Wendy Briggs

From: Mark Peterson
Sent: Friday, January 04, 2013 1:59 PM
To: Sandy Fedden
Subject: RE: a couple of things...

Sandy, OK to meeting with Adam and others on Monday at 6:00 pm. Hold off on scheduling the meeting with Mr. Hales regarding Allied contract. I have asked David to give me more details as to the purpose of the meeting. mp

Mark R. Peterson
City Manager
Town of Normal
Normal, IL 61761
(309) 454-9777
mpeterson@normal.org

"Committed to Service Excellence"


 Please consider the environment before printing this e-mail

From: Sandy Fedden
Sent: Friday, January 04, 2013 12:59 PM
To: Mark Peterson
Subject: a couple of things...

1. Adam called and wants to meet with you at 6:00 p.m. prior to Monday's meeting regarding a status update on the Magers/Tinervin project. He would like to include Kevin McCarthy and Jim Fruin as well.
2. Am I to schedule the meeting with David Hales and members of Town staff regarding the Allied Waste contract and Paradigm?

Sandy Fedden
Administrative Secretary
Town of Normal
11 Uptown Circle
Normal, IL 61761
(309) 454-9503
sfedden@normal.org

"Committed to Service Excellence"

 Please consider the environment before printing this e-mail

Wendy Briggs

From: Mark Peterson
Sent: Thursday, December 13, 2012 11:08 AM
To: Pamela Reece; escopel@ratioarchitects.com
Cc: Mindy Dance
Subject: RE: Council Chambers - Zdi equip

Mindy, I have a presentation from Paradigm Bioaviation that will have to be loaded up prior to the meeting. mp

Mark R. Peterson
City Manager
Town of Normal
Normal, IL 61761
(309) 454-9777
mpeterson@normal.org

"Committed to Service Excellence"

☐ Please consider the environment before printing this e-mail

-----Original Message-----

From: Pamela Reece
Sent: Thursday, December 13, 2012 11:01 AM
To: escopel@ratioarchitects.com
Cc: Mindy Dance; Mark Peterson
Subject: RE: Council Chambers - Zdi equip

Ed and Mindy

I'm hoping that someone is aware of what needs to be done to prepare the Council chambers for Monday's City Council meeting? I presume this has been addressed. I don't recall hearing anything after my email below.

Pam

Pamela Reece
Deputy City Manager
Town of Normal
11 Uptown Circle
Normal IL 61761
309-454-9502 phone
309-454-9609 fax

☐ Please consider the environment before printing this e-mail

-----Original Message-----

From: Pamela Reece
Sent: Thursday, December 06, 2012 7:03 PM
To: escopel@ratioarchitects.com
Cc: Mindy Dance; Mark Peterson

Subject: Council Chambers - Zdi equip

Ed

Zdi notified us today that they needed to take their equipment from the council chambers that had been used as the temporary fix. Can you find out from Thorburn: 1) what needs to happen next week to get the room ready for the Dec 17 council meeting; and 2) what is the status of his punch list following his visit last week?

Sent from my iPhone

Wendy Briggs

From: Mindy Dance
Sent: Thursday, December 13, 2012 1:08 PM
To: Mark Peterson
Subject: RE: Council Chambers - Zdi equip

Thanks!

Thank you,

Mindy L. Dance
Director of Information Technology
Town of Normal
11 Uptown Circle
Normal, IL 61761
Phone: 309-454-9612
Fax: 309-454-9667

"Committed to Service Excellence"


 Please consider the environment before printing this e-mail

From: Mark Peterson
Sent: Thursday, December 13, 2012 1:05 PM
To: Mindy Dance
Subject: RE: Council Chambers - Zdi equip

Mindy, I have the thumb drive with the Paradigm BioAviation presentation to Sandy to deliver to you. mp

Mark R. Peterson
City Manager
Town of Normal
Normal, IL 61761
(309) 454-9777
mpeterson@normal.org

"Committed to Service Excellence"

 Please consider the environment before printing this e-mail

From: Mindy Dance
Sent: Thursday, December 13, 2012 11:10 AM
To: escopel@ratioarchitects.com; Pamela Reece
Cc: Mark Peterson
Subject: RE: Council Chambers - Zdi equip

ZDI has agreed to leave the equipment for this meeting.

Sent from my Android phone using TouchDown (www.nitrodesk.com)

-----Original Message-----

From: Pamela Reece [preece@normal.org]

Received: Thursday, 13 Dec 2012, 11:01am

To: escopel@ratioarchitects.com [escopel@ratioarchitects.com]

CC: Mindy Dance [mdance@normal.org]; Mark Peterson [mpeterson@normal.org]

Subject: RE: Council Chambers - Zdi equip

Ed and Mindy

I'm hoping that someone is aware of what needs to be done to prepare the Council chambers for Monday's City Council meeting? I presume this has been addressed. I don't recall hearing anything after my email below.

Pam

Pamela Reece
Deputy City Manager
Town of Normal
11 Uptown Circle
Normal IL 61761
309-454-9502 phone
309-454-9609 fax

Π Please consider the environment before printing this e-mail

-----Original Message-----

From: Pamela Reece

Sent: Thursday, December 06, 2012 7:03 PM

To: escopel@ratioarchitects.com

Cc: Mindy Dance; Mark Peterson

Subject: Council Chambers - Zdi equip

Ed

Zdi notified us today that they needed to take their equipment from the council chambers that had been used as the temporary fix. Can you find out from Thorburn: 1) what needs to happen next week to get the room ready for the Dec 17 council meeting; and 2) what is the status of his punch list following his visit last week?

Sent from my iPhone

Wendy Briggs

From: Mark Peterson
Sent: Thursday, December 13, 2012 1:05 PM
To: Mindy Dance
Subject: RE: Council Chambers - Zdi equip

Mindy, I have the thumb drive with the Paradigm BiaAviation presentation to Sandy to deliver to you. mp

Mark R. Peterson
City Manager
Town of Normal
Normal, IL 61761
(309) 454-9777
mpeterson@normal.org

"Committed to Service Excellence"



Please consider the environment before printing this e-mail

From: Mindy Dance
Sent: Thursday, December 13, 2012 11:10 AM
To: escopel@ratioarchitects.com; Pamela Reece
Cc: Mark Peterson
Subject: RE: Council Chambers - Zdi equip

ZDI has agreed to leave the equipment for this meeting.

Sent from my Android phone using TouchDown (www.nitrodesk.com)

-----Original Message-----

From: Pamela Reece [preece@normal.org]
Received: Thursday, 13 Dec 2012, 11:01am
To: escopel@ratioarchitects.com [escopel@ratioarchitects.com]
CC: Mindy Dance [mdance@normal.org]; Mark Peterson [mpeterson@normal.org]
Subject: RE: Council Chambers - Zdi equip

Ed and Mindy

I'm hoping that someone is aware of what needs to be done to prepare the Council chambers for Monday's City Council meeting? I presume this has been addressed. I don't recall hearing anything after my email below.

Pam

Pamela Reece
Deputy City Manager
Town of Normal
11 Uptown Circle
Normal IL 61761
309-454-9502 phone
309-454-9609 fax

Π Please consider the environment before printing this e-mail

-----Original Message-----

From: Pamela Reece

Sent: Thursday, December 06, 2012 7:03 PM

To: escopel@ratioarchitects.com

Cc: Mindy Dance; Mark Peterson

Subject: Council Chambers - Zdi equip

Ed

Zdi notified us today that they needed to take their equipment from the council chambers that had been used as the temporary fix. Can you find out from Thorburn: 1) what needs to happen next week to get the room ready for the Dec 17 council meeting; and 2) what is the status of his punch list following his visit last week?

Sent from my iPhone

Wendy Briggs

From: Andrew Huhn
Sent: Monday, December 17, 2012 12:12 PM
To: Finance
Subject: RE: Council Tonight and Mark's Dept Head meeting Today

Council Tonight

- Approve purchase of Dell Computer equipment – computer replacement of 57 desktops and 24 laptops
- Approve extending the Diabetes Disease Management Program – this is a program that helps employees with Diabetes monitor their condition at no cost to the employee
- Approve a contract with DK Mallon to conduct a grocery feasibility study for Uptown Normal
- Approve the termination of a contract with Resource Management LLC and authorize a contract with Midwest Fiber recycling
- Approve an agreement with the Town Golf Pro Shop manager to have exclusive rights to provide golf lessons. The Town received a share of the golf lesson revenue
- Approve an agreement with the Ecology Action Center to provide Storm Water Education services
- Approve certain Taxable Allowances to be reported as IMRF income. This relates to auto allowances
- Approve multiple code enforcement changes
- Approve the Uptown redevelopment contract of the Uptown One building
- Presentation from Paradigm BioAviation regarding plans to site a waste to energy collection facility. This facility will convert waste to jet fuel

Mark's meeting

- Meet and confer this week, for City Hall staff the meeting is Wednesday 9:30 to 11:00 in the Ron Hill conference room
- People who receive the electricity from Ameren will be receiving letters in the next week or so allowing them to opt out of the electricity aggregation program. Not sure why someone would do that as the rate obtained through the program will provide approximately a 26% savings over the current per kilowatt hour.

Christmas Party this Wednesday, don't forget your gift for the secret Santa exchange.....we will of course have lunch, gift exchange and a game to play.....

Let me know if you have any questions and have a good week, Andrew.

Andrew Huhn, CPA

Finance Director
Town of Normal
11 Uptown Circle
Normal, Illinois 61761
309-454-9742 (work)
309-261-2033 (cell)
ahuhn@normal.org



Please consider the environment before printing this e-mail

Wendy Briggs

From: Robin Weaver
Sent: Thursday, January 24, 2013 2:42 PM
To: Tom Bierma
Subject: RE: Guest speaker in HSC 145

Yes, those items plus I will raise the issues and data relating to Household Hazardous Waste (HHW) and electronics recycling. The recent proposal by a firm called Paradigm to build a facility to turn all of our Bloomington/Normal waste streams into jet fuel will be introduced with considerations noted. At this time this is virtually no data.

Thank you for inviting me. I'm looking forward to it.

Robin Weaver
Director of Public Works
Town of Normal
1301 Warriner St.
Normal, IL 61761
309-454-9571
rweaver@normal.org

-----Original Message-----

From: Tom Bierma [<mailto:tbierma@ilstu.edu>]
Sent: Thursday, January 24, 2013 12:38 PM
To: Robin Weaver
Subject: RE: Guest speaker in my EH class?

Hi Robin,

As you are thinking about things you could talk about next week, here are some thoughts:

1. The decision to go from drop box to curbside single stream for residential recycling (costs, logistics, public opinion, effectiveness, etc.)
2. The decision to go with standard residential waste bins and automated pick up (costs, health & safety, public opinion, etc.)
3. Selecting a recycling company (switch to Midwest Fiber)
4. Recycling and trash pick up at apartments (why Normal doesn't do it).
5. Ongoing use of recycle dropboxes.
6. Other waste/recycling issues
7. Other Public Works and sustainability issues.

Thanks, Robin.

Tom

Great. Thanks, Robin.

Here is a map to our departmental office in Felmley:

<http://my.ilstu.edu/~tbierma/isumap.html>. They'll call me when you arrive and I can take you to the classroom.

If you park in the Bone Student Center parking lot and bring your ticket, we can validate it and pay for the parking.

An outline would be great. Again, a focus on your own experiences would be most interesting and beneficial for the students.

Tom

At 04:51 PM 1/15/2013, you wrote:

>Yes, I'll be a guest speaker for your class. My preferred date is Jan.

>31. I will prepare an outline and would then like to discuss it with

>you to make sure that it serves the intended purpose. Where is the class held?

>

>Robin Weaver

>Director of Public Works

>Town of Normal

>1301 Warriner St.

>Normal, IL 61761

>309-454-9571

>rweaver@normal.org

>

>-----Original Message-----

>From: Tom Bierma [<mailto:tbierma@ilstu.edu>]

>Sent: Monday, January 14, 2013 3:08 PM

>To: Robin Weaver

>Subject: Guest speaker in my EH class?

>

>Hi Robin,

>

>My HSC 145 course includes quite a bit of material on solid and

>hazardous waste management. The students are primarily environmental health majors.

>Many will have EHS responsibilities with companies, including waste

>management. A few become county solid waste coordinators or similar

>public positions.

>

>I think the students could really benefit from your experience with MSW

>management, the changes in recycling, etc. I think it would be great if

>you could share the factors that have gone into decision-making and the

>data you look at when evaluating programs (volumes, costs,

>contamination, etc.)

>

>Would you be willing to be a guest speaker? The class meets Tuesdays

>and Thursdays from 2-3:15 pm. Ideal dates would be 1/31 or 2/5 but we

>could accommodate whatever schedule works best for you.

>

>Thanks, Robin.

>

>Tom

>

>Thomas J. Bierma, MBA, Ph.D.

>Research Professor of Environmental Health Illinois State University

>309/438-7121

>tbierma@ilstu.edu

Thomas J. Bierma, MBA, Ph.D.

Research Professor of Environmental Health Illinois State University

309/438-7121

tbierma@ilstu.edu

Wendy Briggs

From: Mark Peterson
Sent: Thursday, October 11, 2012 10:04 AM
To: Wasson, Bill
Subject: RE: Monthly Meeting

Bill and David, I will be there on Monday. Orval Yarger stopped by my office on Monday of this week. mp

Mark R. Peterson
City Manager
Town of Normal
Normal, IL 61761
(309) 454-9777
mpeterson@normal.org

"Committed to Service Excellence"



Please consider the environment before printing this e-mail

From: Wasson, Bill [<mailto:Bill.Wasson@mcleancountyil.gov>]
Sent: Thursday, October 11, 2012 9:03 AM
To: David Hales; Mark Peterson
Subject: RE: Monthly Meeting

I have it on my calendar. We have not heard from them for about a year. I'd be interested in an update.

William R. (Bill) Wasson
County Administrator
McLean County Administrator's Office
Room 401
115 E. Washington St.
Bloomington, IL 61702-2400

The e-mail message and all attachments transmitted with it may contain legally privileged and/or confidential information intended solely for the use of the addressee. If the reader of this message is not the intended recipient, you are hereby notified that any reading, dissemination, distribution, copying, or other use of this message or its attachments is strictly prohibited. If you have received this message in error, please notify the sender immediately and delete this message and all copies and backups thereof. Thank you.

From: David Hales [<mailto:dhales@cityblm.org>]
Sent: Thursday, October 11, 2012 9:00 AM
To: Mark Peterson; Wasson, Bill
Subject: Monthly Meeting

Mark and Bill,

Are the two of you available to meet on Monday morning at 7:00am at IHOP?

One topic I would like to discuss is the Paradigm Waste to Jet Fuel project and its impact on future landfill contracts. I met with Alan and Lester yesterday and can provide you with an update assuming you did not have your own meetings with these two gentlemen.

David

David A. Hales
City Manager
City of Bloomington
109 E. Olive Street
PO Box 3157
Bloomington, IL 61702-3157
P 309-434-2210 F 309-434-2802
dhales@cityblm.org